



GAT MONTHLY MEMBERSHIP PROGRESS REPORT

Results as of: 5/31/2023

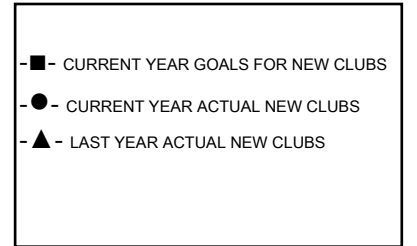
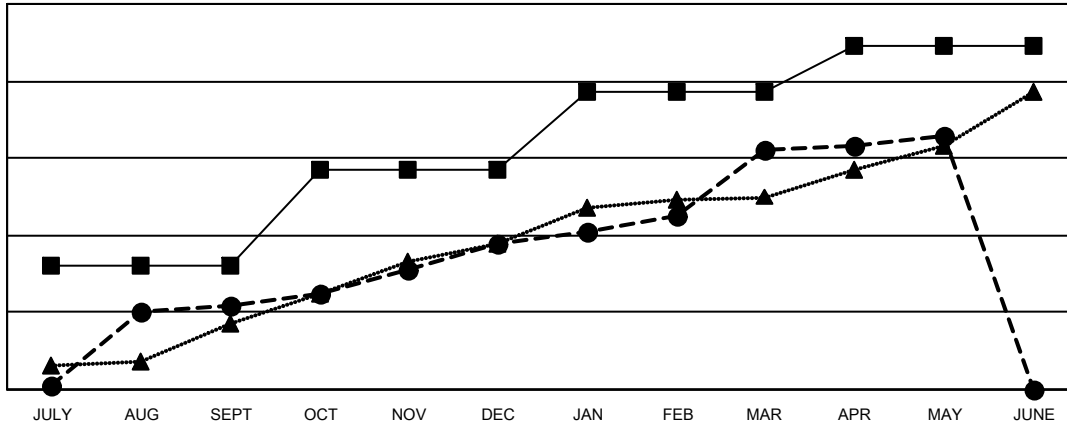
Multiple District 318

LOCATION: INDIA

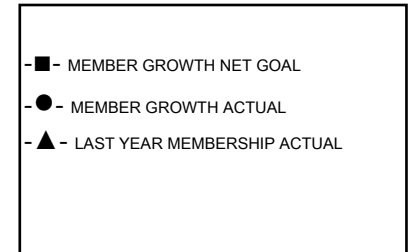
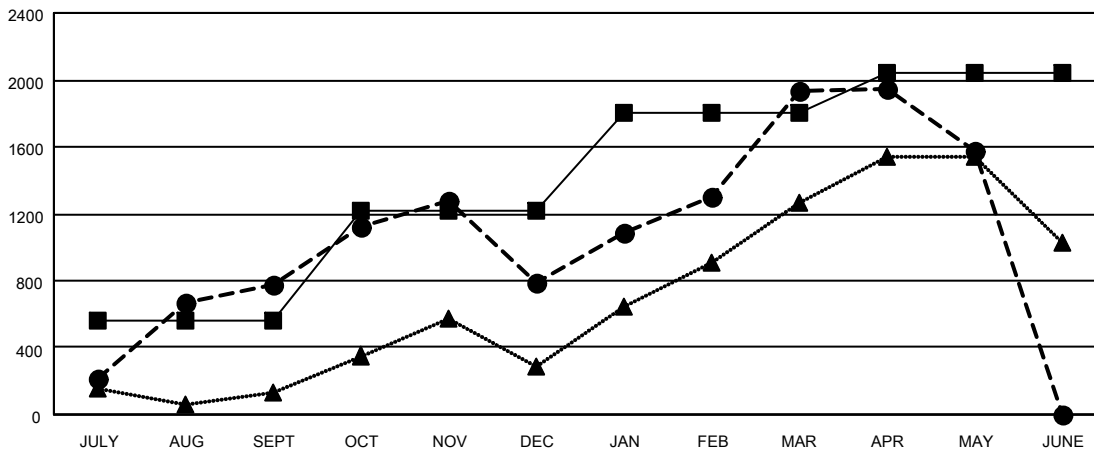
Clubs			
RESULTS FOR 2022-2023			
QUARTER	NEW CLUB GOAL	NEW CLUBS	DROPPED CLUBS
JULY/AUG/SEPT	32	22	3
OCT/NOV/DEC	25	16	22
JAN/FEB/MAR	20	24	6
APR/MAY/JUNE	12	4	1

Members			
RESULTS FOR 2022-2023			
QUARTER	MEMBER GROWTH NET GOAL	MEMBER GROWTH ACTUAL	DROPPED MEMBERS ACTUAL (including transfers)
JULY/AUG/SEPT	560	1,361	538
OCT/NOV/DEC	655	1,360	1,259
JAN/FEB/MAR	590	1,572	355
APR/MAY/JUNE	240	405	697

GOALS AND ACTUAL NEW CLUBS CUMULATIVE



GOALS AND ACTUAL MEMBERS CUMULATIVE



DROPPED CLUBS: 32	
DROPPED MEMBERS	
DECEASED	112
CLUB CANCELLED	588
OTHER	2,149
TOTAL	2,849

558 CLUBS OF 826 ADDED 1 OR MORE NEW MEMBERS

[CLICK HERE FOR CUMULATIVE MEMBERSHIP DATA](#)

GENDER DISTRIBUTION	
MALE	21,507 (80.60%)
FEMALE	5,176 (19.40%)
NON BINARY	1 (0.00%)
PREFER NOT TO ANSWER	1 (0.00%)
TOTAL FAMILY UNIT MEMBERS	9,064
FAMILY MEMBERS PAYING HALF DUES	4,805